

# SunPower® InvisiMount™ | Residential Mounting System

## Simple and Fast Installation

- Integrated module-to-rail grounding
- Pre-assembled mid and end clamps
- Levitating mid clamp for easy placement
- Mid clamp width facilitates consistent, even module spacing
- Simple, pre-drilled rail splice
- UL 2703 Listed integrated grounding

## Flexible Design

- Addresses nearly all sloped residential roofs
- Design in landscape and portrait
- Rails enable easy obstacle management

## Customer-Preferred Aesthetics

- #1 module and #1 mounting aesthetics
- Best-in-class system aesthetics
- Premium, low-profile design
- Black anodized components
- Hidden mid clamps and end clamps and capped, flush rails

## Part of Superior System

- Built for use with SunPower DC and AC modules
- Best-in-class system reliability and aesthetics
- Combine with SunPower modules and monitoring app



## Elegant Simplicity

SunPower® InvisiMount™ is a SunPower-designed rail-based mounting system. The InvisiMount system addresses residential sloped roofs and combines faster installation time, design flexibility, and superior aesthetics. The InvisiMount product was specifically envisioned and engineered to pair with SunPower modules. The resulting system-level approach will amplify the aesthetic and installation benefits for both homeowners and installers.

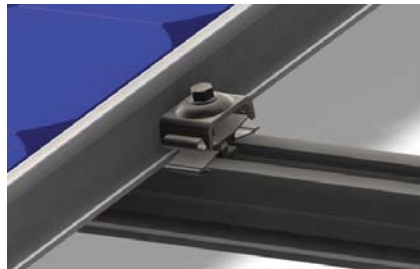
[sunpower.com](http://sunpower.com)



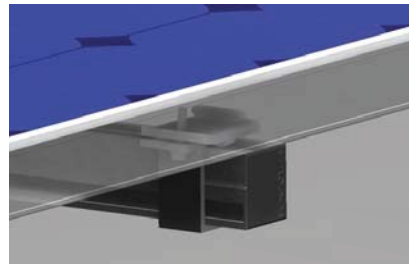
# SunPower® InvisiMount™ | Residential Mounting System

## InvisiMount Component Images

Module\* / Mid Clamp and Rail



Module\* / End Clamp and Rail



Mid Clamp



End Clamp



Rail & Rail Splice



Ground Lug Assembly



End Cap



### InvisiMount Component Details

Component	Material	Weight
Mid Clamp	Black oxide stainless steel AISI 304	63 g (2.2 oz)
End Clamp	Black anodized aluminum alloy 6063-T6	110 g (3.88 oz)
Rail	Black anodized aluminum alloy 6005-T6	830 g/m (9 oz/ft)
Rail Splice	Aluminum alloy 6005-T5	830 g/m (9 oz/ft)
Ground Lug Assembly	304 stainless (A2-70 bolt; tin-plated copper lug)	106.5 g/m (3.75 oz)
End Cap	Black acetal (POM) copolymer	10.4 g (0.37 oz)

### Roof Attachment Hardware Supported by InvisiMount System Design Tool

Application	Supported Hardware
	<ul style="list-style-type: none"> <li>• Composition Shingle Rafter Attachment</li> <li>• Composition Shingle Roof Decking Attachment</li> <li>• Curved and Flat Tile Roof Attachment</li> <li>• Universal Interface for Other Roof Attachments</li> </ul>

### InvisiMount Operating Conditions

Temperature	-40° C to 90° C (-40° F to 194° F)
Max. Load (LRFD)	<ul style="list-style-type: none"> <li>• 3000 Pa uplift</li> <li>• 6000 Pa downforce</li> </ul>

### InvisiMount Warranties And Certifications

Warranties	<ul style="list-style-type: none"> <li>• 25-year product warranty</li> <li>• 5-year finish warranty</li> </ul>
Certifications	<ul style="list-style-type: none"> <li>• UL 2703 Listed</li> <li>• Class A Fire Rated</li> </ul>

### Roof Attachment Hardware Warranties

Refer to roof attachment hardware manufacturer's documentation.

\*Module frame that is compatible with the InvisiMount system required for hardware interoperability.

© 2015 SunPower Corporation. All Rights Reserved. SUNPOWER, the SUNPOWER logo, and INVISIMOUNT are trademarks or registered trademarks of SunPower Corporation. All other trademarks are the property of their respective owners. Specifications included in this datasheet are subject to change without notice.

sunpower.com  
Document #509506 RevC